

Manual Supplement

Manual Title:	1760 Reference	Supplement Issue:	1
Print Date:	July 2006	Issue Date:	3/09
Revision/Date:	1, 6/07	Page Count:	1

This supplement contains information necessary to ensure the accuracy of the above manual. This manual is distributed as an electronic manual on the following CD-ROM:

CD Title:	1760
CD Rev. & Date:	3, 12/2007
CD PN:	2583518

Change #1

On page 1-1, under **Introduction**, in the following paragraph delete the word USB:

The software supports different ways to connect to the instrument (Ethernet, modem, serial cable) making it an ideal tool for many different applications.

In Chapter 2, delete **Installing Windows USB Drivers** pages 2-3 through 2-6.

On page 3-1, under **Introduction**, replace the 1st paragraph with the following and delete the 4th paragraph:

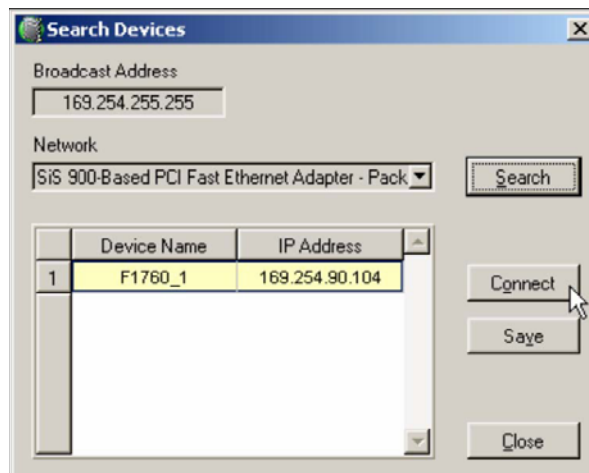
The Recorder supports different methods of communication. It is equipped with an automatic network monitoring feature and dynamically switches IP addresses when Ethernet connections are changed or removed.

Starting on page 3-6, delete the entire **Communication over USB Data Link Cable** section.

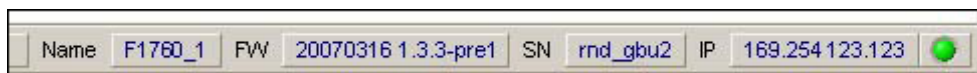
On page 3-7, under **Ethernet LAN Communication Using Fixed IP Addresses**, replace step 1 with:

1. Establish a connection to the recorder. Connect the Ethernet crossover cable between the PC and the Recorder. Wait approximately 1 minute. Both Windows XP and the Recorder need this time to assign valid IP addresses to the network interfaces.

Run the PQ Analyze software and select **Transfer > Fluke 1760 > Search devices**.



Your instrument will show up in the list. Press **Connect** to establish a connection between Fluke 1760 and your computer. The status line shows information about the connection.



On page 3-9, delete the first *Note*.